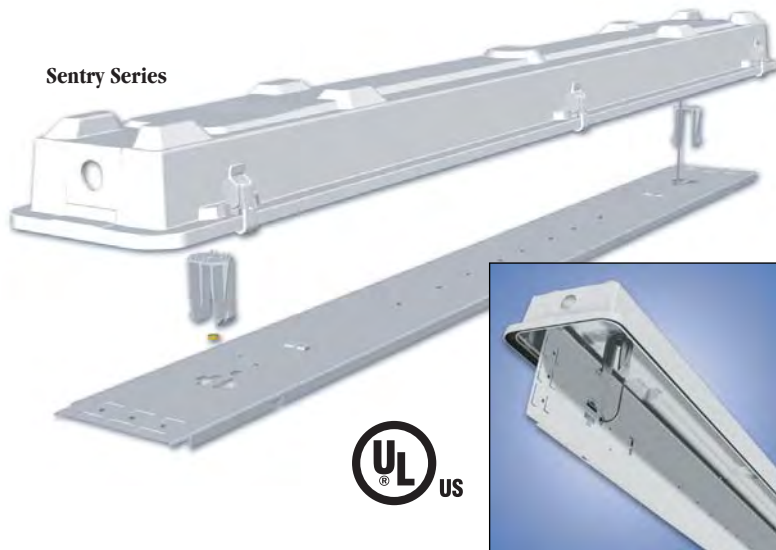


Universal Gear Tray

for Vapor Tight Fixtures



The new gear tray option is part of a series of advanced features and product improvements developed by A.L.P. to enhance the performance and value of the enclosed and gasketed family of products.

Features:

- Rugged reinforced FRP housing
- 5VA (F1) UL recognized
- Gear tray replaces full metal enclosure
Reduces component cost
Lowers assembly labor
Reduces weight
Lowers shipping costs
- UL recognized component
- Accepts standard T5, T8, T12 slimline and HO lampholders

Featured Options

Mounting

- Spring-mount bracket (stainless steel) for Sentry series: BRKTS22PK; for TMW series BRKTT22PK
-Easiest installation ever
-Bracket installs first, then fixture snaps securely into place
- Brass mounting stud
-For custom mounting

Lenses

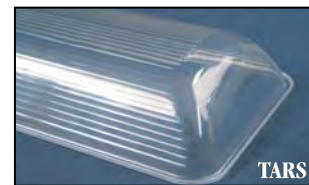
- New TARS lens geometry improves strength dramatically
- Female mold thermoforming creates strong, rigid and maximum seal strength with all A.L.P. lens shapes
- Polycarbonate and higher DR blends available from new processing operations on most A.L.P. lens shapes

Latches


- Improved acetal copolymer compound makes the LCW latch even stronger
- LSS retention clip improves maintainability of fixtures with the LSS family of stainless steel latches

IP65 & IP67

- Real performance advancements with improved En-Seal™ gasketing technology



A.L.P.'s new EN-SEAL™ gasketing offers unprecedented resistance to water absorption. EN-SEAL™ gasketing tested 100% moisture-free after 144 hours of submersion as compared to conventional foam gasketing where complete saturation is reached within 1 hour.

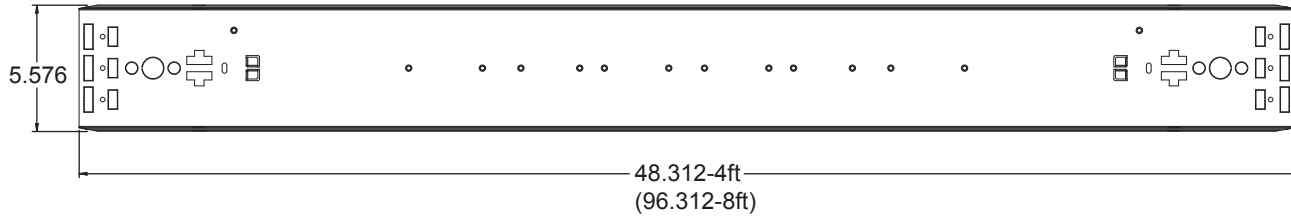


IP65/IP67*

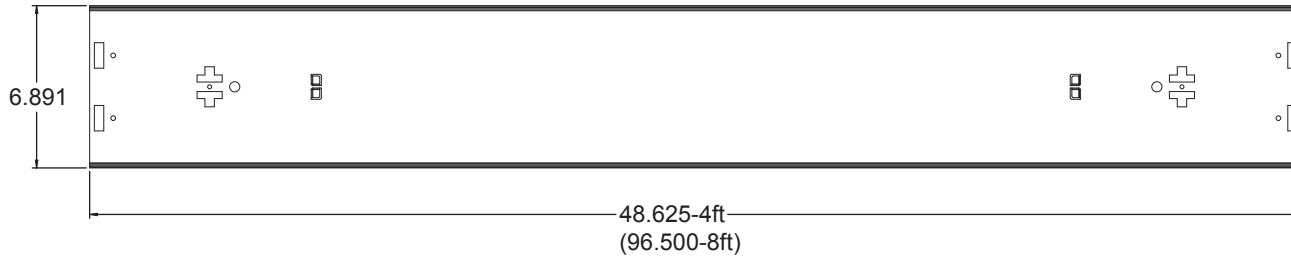
SPECIFICATIONS



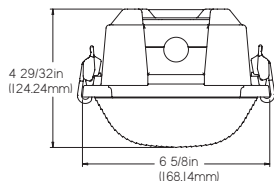
Sentry Series Gear Tray



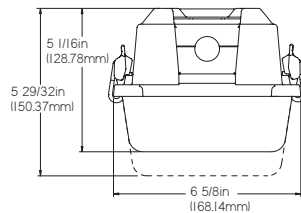
TMW Series Gear Tray



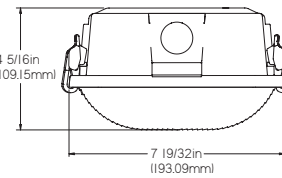
Lens options:



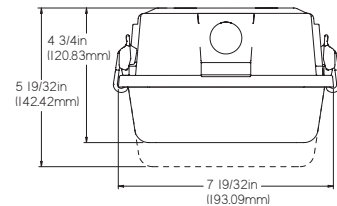
SENTRY TARS



**SENTRY ARS
SENTRY ARD**



TMW TARS



**TMW 4D
TMW 4DD**

Lamp Configurations	Gear Tray Part#	Housing*	Lens*
Sentry 4-ft T8/T12 2 4-ft lamps	SENTRYGT4		
Optional Configurations T5/T8/T12 4-ft lamp‡ HO / SL 1 4-ft lamp HO / SL 2 4-ft lamps	SENTRYGT4U SENTRYGT41HO SENTRYGT4HO	4F-2-GT	4ARS 4ARD 4TARS
Sentry 8-ft T8/T12 4 4-ft lamps	SENTRYGT8		
Optional Configurations T5/T8/T12 4-ft lamps (in series)‡ HO / SL 1 8-ft lamp HO / SL 2 8-ft lamps	SENTRYGT8U SENTRYGT81HO SENTRYGT8HO	8F-2-GT	8ARS 8ARD 8TARS
TMW 4-ft T8/T12 2 4-ft lamps	TMWGT4		
Optional Configurations T5/T8/T12 4-ft lamp‡ HO / SL 1 4-ft lamp HO / SL 2 4-ft lamps	TMWGT4U TMWGT41HO TMWGT4HO	TMWS 4-GT	TMW4D TMW4DD
TMW 8-ft T8/T12 4 4-ft lamps	TMWGT8		
Optional Configurations T5/T8/T12 4-ft lamps (in series) ‡ HO / SL 1 8-ft lamp HO / SL 2 8-ft lamps	TMWGT8U TMWGT81HO TMWGT8HO	TMWS 8-GT	TMW8D TMW8DD

Standard domestic configuration

*See housing / lens data sheet for configurations.

‡Caution: Some T5 HO lamp combinations may cause the operating temperature within the enclosure to exceed the ballast manufacturer's recommended levels. Please test for specific component and application performance.

Hardware Kit	GEARTRAY-HDW
	41HO / 81HO
	4HO / 81HO
	GT4 / GT8
	GT4U / GT8U

Note: Gear trays must be used in conjunction with listed UL recognized housing.



A.L.P.

LIGHTING COMPONENTS, INC.

CORPORATE HQ: CHICAGO, IL U.S.A.

For more information contact us at:

(800) 621-1348 • FAX: (800) 438-2500 • www.alplighting.com

© 2007 A.L.P. LIGHTING COMPONENTS, INC., PRINTED IN THE U.S.A., GEGTU 0707