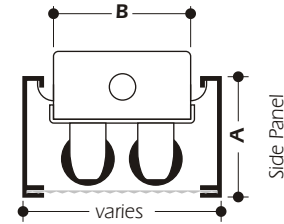
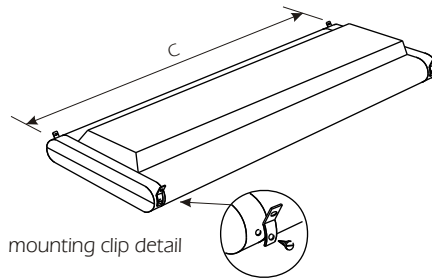
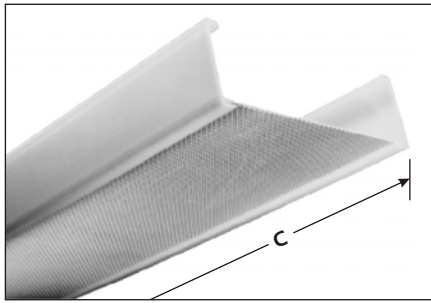


## Restore-A-Lite



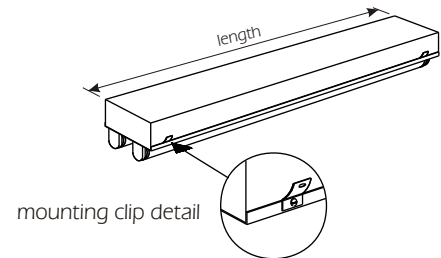
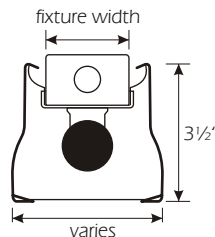
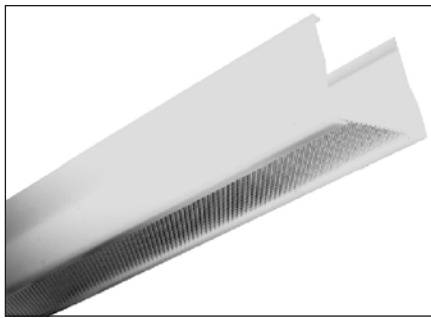
### Description

The Restore-A-Lite diffuser is custom fabricated to replace old discolored or discontinued wraparound diffusers. These diffusers will update and improve the lighting system. The three-piece snap together design utilizes an ALP 120 clear lens with side panels, available in white or clear linear prisms.

| CATALOG NO.  | FIXTURE WIDTH                       | A                           | B                           | C                            |
|--|-------------------------------------|-----------------------------|-----------------------------|------------------------------|
| RL   | To 5"<br>To 12"<br>To 21"<br>To 24" | SPECIFY<br>OVERALL<br>DEPTH | SPECIFY<br>FIXTURE<br>WIDTH | SPECIFY<br>OVERALL<br>LENGTH |
| <b>WHEN ORDERING:</b><br>Sample or drawing is required<br>Supplied with Prismatic .110" Thick (for other lens types contact A.L.P.)<br>Specify Color of Side Rails, Clear or White<br>Specify if End Plates are required, Clear or White<br>Specify if Mounting Clips are Required |                                     |                             |                             |                              |

**Note:** Specify RL Clips when required. Specify 4' or 8'.  
All Restore-A-Lites are available in 4' or 8'.

## Strip-Lite



### Description

The Strip-Lite is a simple and economical method of converting a standard bare lamp strip light to a fully enclosed wraparound fixture. These units utilize the ALP 120 clear prismatic lens and white side panels with linear prisms. The Strip-Lite is designed to custom fit any strip light fixture using our mounting clips.

### How to Order

**Single Fixtures** - measure width and length of fixture body.

**Tandem Fixtures** - indicate the width and length of each fixture, the overall length of each row and number of fixtures in each row.

| CATALOG NUMBER   | FIXTURE WIDTH            | OVERALL LENGTH |
|--|--------------------------|----------------|
| SL   | To 4"<br>To 7"<br>To 10" | 48"            |
| <b>WHEN ORDERING:</b><br>Sample or drawing is required<br>Supplied with Prismatic .110" Thick (for other lens types contact A.L.P.)<br>Specify Color of Side Rails, Clear or White<br>Specify if End Plates are required, Clear or White<br>Specify if Mounting Clips are Required |                          |                |

**Note:** Specify 4' or 8'.