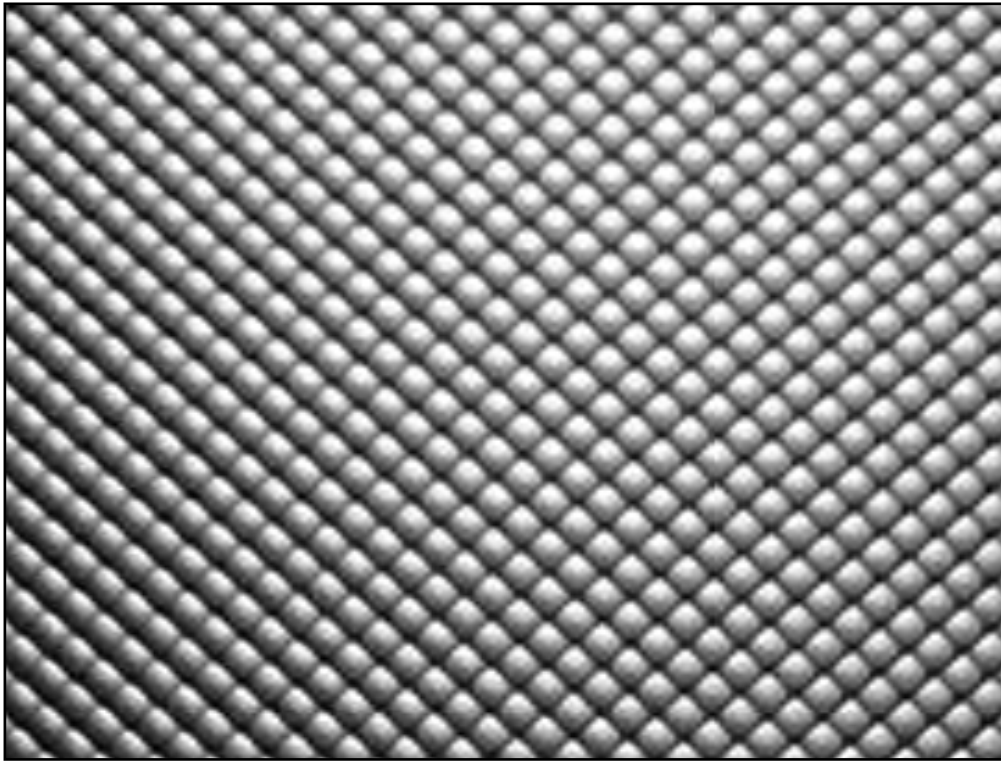


PRISMATIC SHEET



P12

Description

A.L.P. prismatic sheet products are available in acrylic and polycarbonate in a variety of patterns and thicknesses.

The superior quality of our prismatic sheet can be used in a variety of lighting applications. Available in standard and custom sizes in both carton and pallet packaging.

Prismatic sheets are available with a conductive grid which shields electromagnetic interference (EMI/RFI) and complies with the requirements of MIL-STD-461(E). Please inquire on this option.

P12 pattern:
3/16" base, female, conical prism

P35 pattern:
3/8" base, female, conical prism

P49 pattern:
3/16" base, male, conical prism

Application

A.L.P. prismatic sheet products are suitable for thermoforming, custom components, and as a diffuser lighting component.

Ordering Information

Please call 877-257-5841 for price and delivery. Specify dimensions when placing an order.

Notice

A.L.P. Lighting Components assumes no responsibility for suitability of luminaires and applications. The use of lenses near and above 70°C temperatures with high UV output light sources will cause degradation of the material.

Prismatic Sheet

MATERIALS:

Acrylic
HID acrylic
Hi-impact acrylic
Polycarbonate

PATTERNS:

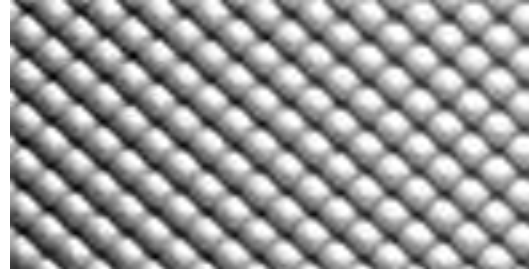
P12
P35
P49

RFI SHIELDING AVAILABLE

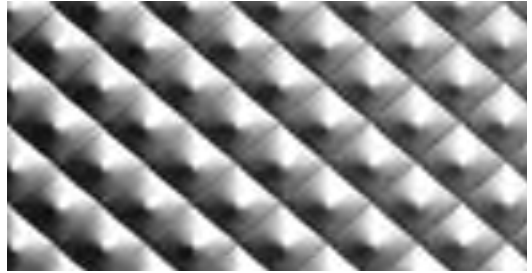
TINTING AVAILABLE

Prismatic Sheet

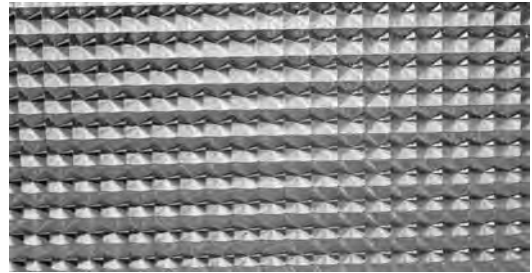
PATTERN	STOCK THICKNESSES
P12 - Acrylic	.100
	.110
	.125
	.135
	.187
P12 - Acrylic Silver Tint	.125
P12 - Acrylic RFI Shielding	.125
P12 - Acrylic - HID	.125
	.187
P12 - Acrylic - Hi Impact	.125
	.140
	.187
P12 - Polycarbonate	.125
	.187
P35 - Acrylic	.200
P35 - Acrylic HID	.200
P49 - Acrylic	.150
	.187
P49 - Acrylic RFI	.150
P49 - Acrylic T75 Tint	.150



P12 Pattern



P35 Pattern



P49 Pattern

PLEASE INQUIRE FOR ADDITIONAL OFFERINGS

Materials

A.L.P. Plastics uses a variety of materials in the production of sheet, profiles, formed and molded parts. Please be aware that A.L.P. Plastics does not provide material certifications unless requested by the customer prior to quoting. Our standard manufacturing practice includes the use of reclaimed materials exceeding 25%.

Please visit our web site for the most current material specifications.