

Dur-iFlex™ Optical Overlay for Lighting Applications

Same Aesthetic Appeal as Acrylic, Visibly Better Performance!

- Uniform brightness
- Thin, durable sheet allows Dur-iFlex™ to follow the contours of the most demanding application
- Easily cut, sheared or die stamped
- Available in any size up to 48" wide x 50" long

Dur-iFlex™ HT High Transmission

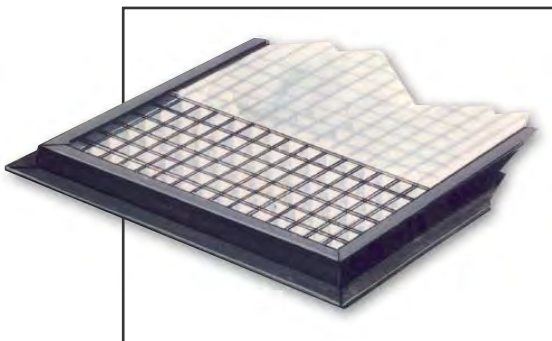
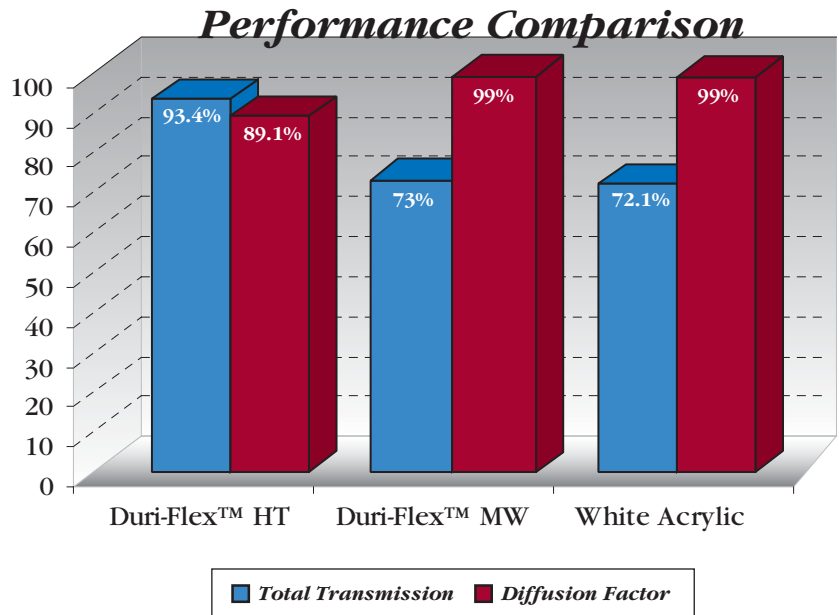
- Maximum light transmission
- Utilizes advanced plano-convex optical pattern for superior lamp shielding
- Total Transmission 93.4%
- Diffusion Factor 89.1%

Dur-iFlex™ MW Matte White

- Standard transmission
- Stipple finish matte white
- Total Transmission 73%
- Diffusion Factor 99%
- Available in .020 and .010

Applications:

Recessed commercial fixtures with plastic or aluminum optical louver
Recessed or suspended commercial fixtures with perforated metal basket



Overlay



RDI Recessed Direct / Indirect



Linear Fluorescent

Dur-iFlex™ HT Optical Overlay Performance Data

Mechanical Properties

Test	Condition	Units	Value
Specific Gravity	D792	g/cm ³	1.33
Tensile Modulus	D638	psi	320,000
Tensile Strength	D638	psi	8,500
Flexural Modulus	D790	psi	320,000
Flexural Strength	D790	psi	12,200
Izod Impact	D256	Ft-lbs/in.	0.93
	(73°F, -40°C)		0.52
Falling Dart Impact	D3029	Ft-lbs	500
	(73°F, -40°C)		400
Heat Deflection Temperature	D648	°F	162
Hardness	D2240	Shore D	106
Gardner Gloss	D523	%	90
Flammability Ratings	UL94 HB		Passes

Dur-iFlex™ MW Optical Overlay Performance Data

Mechanical Properties

Test	Condition	Units	Value
Specific Gravity	D792	g/cm ³	1.32
Tensile Modulus	D638	psi	336,000
Tensile Strength	D638	psi	7,078
Flexural Modulus	D790	psi	380,000
Flexural Strength	D790	psi	12,473
Izod Impact	D256	Ft-lbs/in.	0.98
	(73°F, -40°C)		0.55
Falling Dart Impact	D3029	Ft-lbs	
	(73°F, -40°C)		
Heat Deflection Temperature	D648	°F	162
Hardness	D785	Rockwell R	112
Gardner Gloss	D523	%	
Burglary Resistance	UL 972		Passes
ICC (ICBO)			Certified

