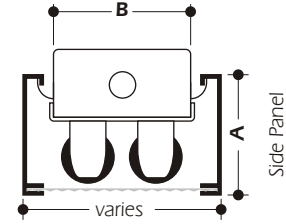
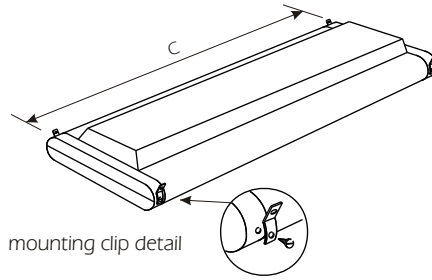
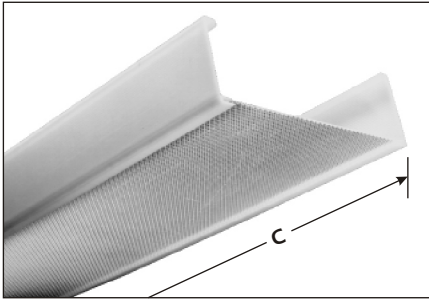


## Restore-A-Lite



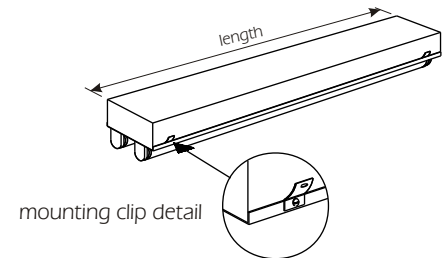
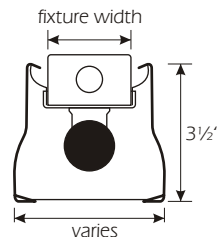
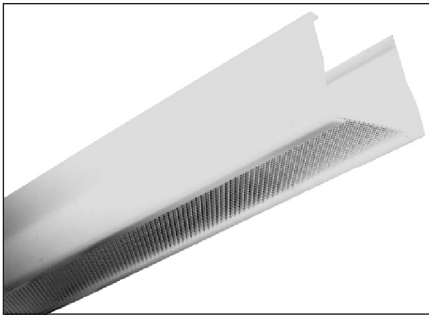
### Description

The Restore-A-Lite diffuser is custom fabricated to replace old discolored or discontinued wraparound diffusers. These diffusers will update and improve the lighting system. The three-piece snap together design utilizes an ALP 120 clear lens with side panels, available in white or clear linear prisms.

CATALOG NO.	FIXTURE WIDTH	A	B	C
RL	To 5" To 12" To 21" To 24"	SPECIFY OVERALL DEPTH	SPECIFY FIXTURE WIDTH	SPECIFY OVERALL LENGTH
<b>WHEN ORDERING:</b> Sample or drawing is required Supplied with Prismatic .110" Thick (for other lens types contact A.L.P.) Specify Color of Side Rails, Clear or White Specify if End Plates are required, Clear or White Specify if Mounting Clips are Required				

**Note:** Specify RL Clips when required. Specify 4' or 8'.  
All Restore-A-Lites are available in 4' or 8'.

## Strip-Lite



### Description

The Strip-Lite is a simple and economical method of converting a standard bare lamp strip light to a fully enclosed wraparound fixture. These units utilize the ALP 120 clear prismatic lens and white side panels with linear prisms. The Strip-Lite is designed to custom fit any strip light fixture using our mounting clips.

### How to Order

**Single Fixtures** - measure width and length of fixture body.

**Tandem Fixtures** - indicate the width and length of each fixture, the overall length of each row and number of fixtures in each row.

CATALOG NUMBER	FIXTURE WIDTH	OVERALL LENGTH
SL	To 4" To 7" To 10"	48"
<b>WHEN ORDERING:</b> Sample or drawing is required Supplied with Prismatic .110" Thick (for other lens types contact A.L.P.) Specify Color of Side Rails, Clear or White Specify if End Plates are required, Clear or White Specify if Mounting Clips are Required		

**Note:** Specify 4' or 8'.