

LED-8055E 30W LED for HID Retrofit for Recessed/ Flood

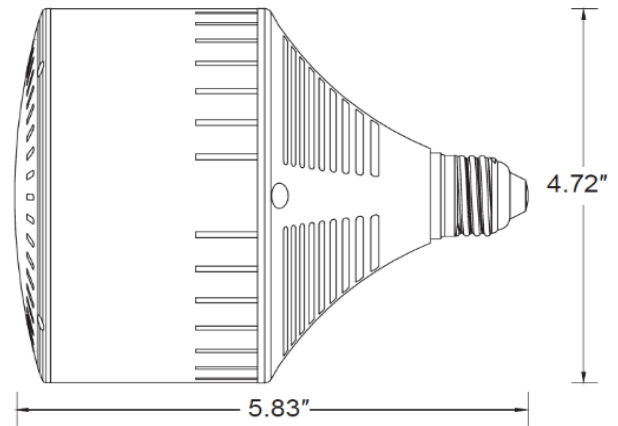


Models

LED-8055EXX, 120-277VAC, cULus, 2700K, 4000K or 5700K CCT, E26
 LED-8055EXXC, 120-347VAC, cUL, 2700K, 4000K or 5700K CCT, E26

Features

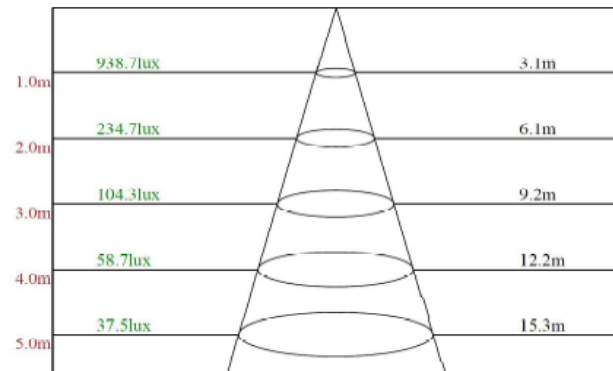
- > 30W LED Replaces 100W MH or HPS HID Lamps
- > UL approved for damp environments and enclosed fixtures
- > Active cooling and dynamic temperature control
- > 50,000 hour rated LED life (supported by LM80 and ISTMT reports (see website))
- > 5 Year Limited Warranty - see website for details
- > UL1598C retains fixture UL Listing
- > Rated for enclosed fixture



Technical Specifications

Models US/CAN	LED-8055E27	LED-8055E42	LED-8055E57	LED-8055E27C	LED-8055E42C	LED-8055E57C
CCT	2700K	4200K	5700K	2700K	4200K	5700K
Power Consumption	30 watts					
Replaces	100w MH/HPS					
Mounting	E26					
Voltage	120-277VAC (USA)			120-347VAC (Canada Only)		
LED Type	24 Hongli SMD LED's					
Beam Angle	120°					
Dimmable	No					
Operating Temp	-40°F - +122°F					
Rated R70 Life	>50,000 Hrs.					
Warranty	5 Year Limited*					
LM79 Specifications	Yes	Yes	Yes	Yes	Yes	Yes
Power (W)	30.2	32.3	32.2	30.2	32.3	32.2
CCT	2783	4105	5958	2783	4105	5958
Lumen Output	2537	2842	2886	2537	2842	2886
Efficacy	83	88	89	83	88	89
THD @ 277V	13.4%	13.4%	10.9%	13.4%	13.4%	10.9%
PF @ 277V	0.9	0.911	0.918	0.9	0.911	0.918
CRI:	82.2	88	88.3	82.2	88	88.3
R9	9	29	37	9	29	37
Duv	-0.0012	0.00127	-0.001	-0.0012	0.00127	-0.001
Test Data Source	LCTECH IES LM79-08 NVLAP 500080-0					
Packaging	4 / Master Carton					
Unit	6.1" x 6.1" x 8.46" 1.80 lbs.					
Master	12.8" x 12.8" x 9.1" 8.0 lbs.					

Lux Distance Curve



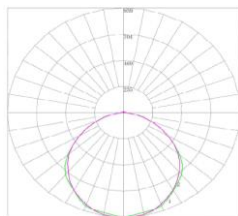
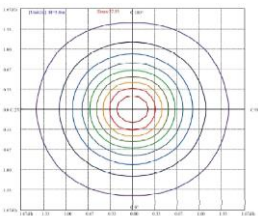
Installation Notes:

- Ballast must be bypassed
- Installing surge/lightning protectors is highly recommended

LED Power Consumption (Watts)	HID Power Consumption (Watts)	HID Ballast Power Consumption (Watts)	Total Savings (Watts)	Annual Energy Savings (14 hrs/day)	Lifetime Energy Savings (over 50,000 hrs)
30	100	15	85	\$48	\$468

ISO Illuminance Diagram

Polar Curves



Mounting Orientation			Minimum Fixture Size Requirements (inches)	
Base Up	Base Down	Horiz	Length	Width
			8.93	6.72
Approved	Approved	Approved	6.72	6.72
			Cu. Inches	403.3



188 S. Northwest Highway • Cary, IL 60013
 (847) 380-3540 • FAX: (847) 380-3542
 www.led-llc.com

