

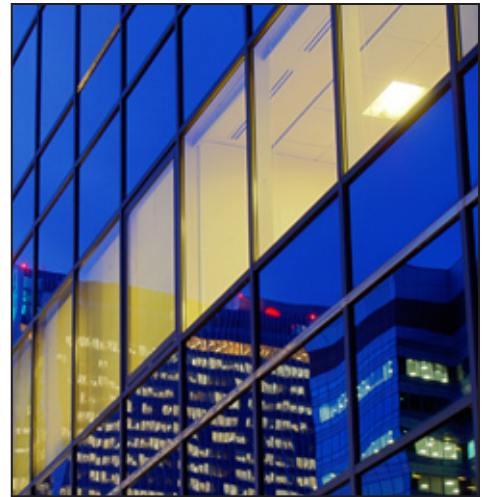
Emergency Fluorescent Power Packs

A comprehensive line of Emergency Fluorescent Power Packs (EFPs) from A.L.P. Lighting Components allows fluorescent lighting fixtures to be used for both normal and emergency operation.

In the event of a power failure, the EFPs switch the fixture to emergency mode and operate one or two of its lamps for a minimum of 90 minutes. Maximum battery recharge time is 24 hours.

Units contain a battery, charger, and inverter circuit in a single package. They can be installed inside or on top of the fixture, as well as remotely mounted. EFPs meet most state and local codes, however consult individual product data sheets for other approvals and listings.

Constructed of maintenance-free steel housings, units are compatible with 1-, 2- and 3-lamp fixtures and accommodate many ballast types including standard, rapid-start, slimline, instant-start, dimming and electronic AC ballasts.



EFP 32GS

Lumen Output: 500
Dimensions:
9.4" Length
2.4" Width
1.5" Height



EFP 42GS

Lumen Output: 750
Dimensions:
9.4" Length
2.4" Width
1.5" Height



EFP 48GS

Lumen Output: 700
Dimensions:
9.4" Length
2.4" Width
1.5" Height



EFP 80GS

Lumen Output: 1400
Dimensions:
13.3" Length
2.4" Width
1.5" Height



EFP 160GS

Lumen Output: 3000
Dimensions:
16.3" Length
5.5" Width
1.75" Height



EFP SL28GS

Lumen Output: 500
Dimensions:
14.3" Length
1.25" Width
1.25" Height



EFP SL32GS

Lumen Output: 500
Dimensions:
10.0" Length
2.0" Width
1.2" Height



EFP SL48GS

Lumen Output: 700
Dimensions:
13.3" Length
2.25" Width
1.3" Height



EFP SL54GS

Lumen Output: 800
Dimensions:
17.75" Length
1.25" Width
1.25" Height



EFP SL80GS

Lumen Output: 1400
Dimensions:
14.25" Length
2.0" Width
1.2" Height



EFP SL540GS

Lumen Output: 1300
Dimensions:
21.5" Length
1.2" Width
1.15" Height



Lighting
Plastics
Solutions

RETROFIT SPECIALISTS

www.mylpsolutions.com

info@mylpsolutions.com

Tampa Bay

2140 Range Road, Suite A | Clearwater, FL 33765
800-587-3310 | 727-441-9581 | 727-446-2451 fax

Central Florida

2119 Directors Row, Suite 5 | Orlando, FL 32809
800-682-4197 | 407-398-1001 | 407-398-1003 fax

Southeast US

3367 W Hospital Avenue, Suite B | Chamblee, GA 30341
800-548-9101 | 770-817-7020 | 770-817-7021 fax

Northeast US

6965 Airport Highway Lane | Pennsauken, NJ 08109
856-661-2442 | 856-661-2447 fax