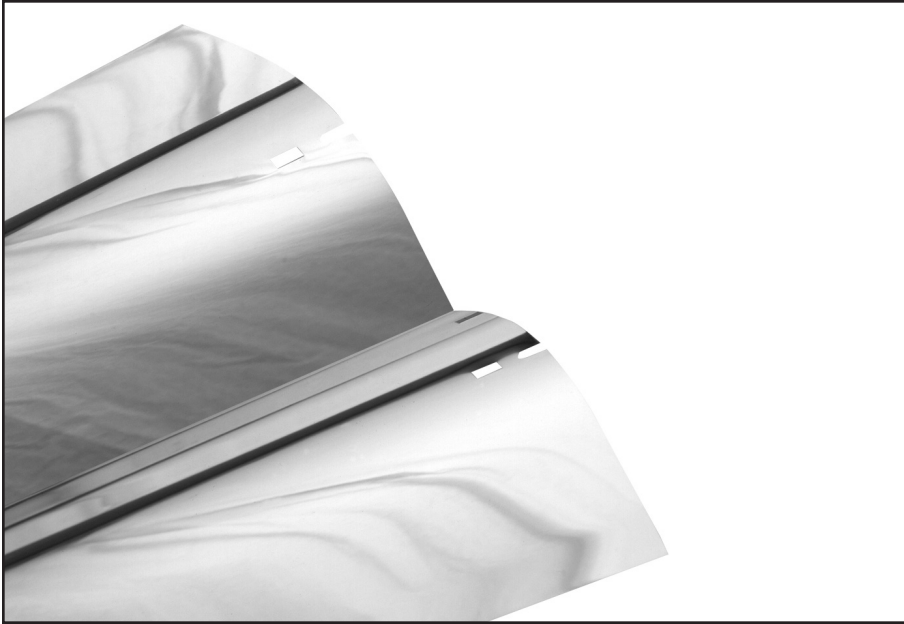


# 7000V Reflector Series

for Troffer and Surface Fixture Retrofit



## Description

7000V Series Reflector Kit is an economical one-piece reflector used to delamp fluorescent recessed / grid troffers. This reduces energy, improves efficiency and keeps light loss to a minimum.

## Features and Benefits

Anodized Aluminum (RA) reflectors are manufactured with an 86% minimum reflectance. The 7000V Reflector is designed and manufactured in compliance with U.L. Standards for retrofit reflectors.

## Applications

Suitable for relamping in commercial, industrial and institutional applications.

## Ordering Information

Please call 800-587-3310 for price and delivery. Typical lead time is four to six weeks.

## Notice

Reflector kits do not come with a ballast and are not pre-wired. Lighting Plastic Solutions, assumes no responsibility for suitability of these materials in any luminaire or application. Please test for fit and function prior to ordering project quantities. Dimensions subject to change without notice.



## 7000V Reflector Series

For troffer and surface fixture retrofit

### Specifications

**Reflector:**  
Anodized Aluminum

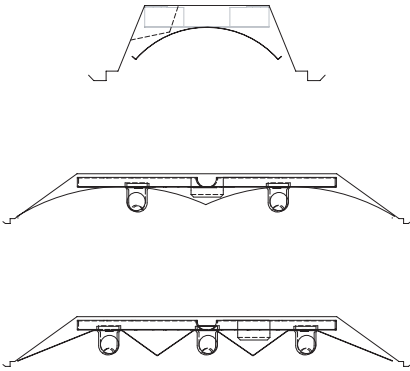
**Efficiency:**  
RA: 86% standard specular  
RM: 94% specular  
RW: 90% diffuse white

**Options:**  
Socket Plate  
End Caps

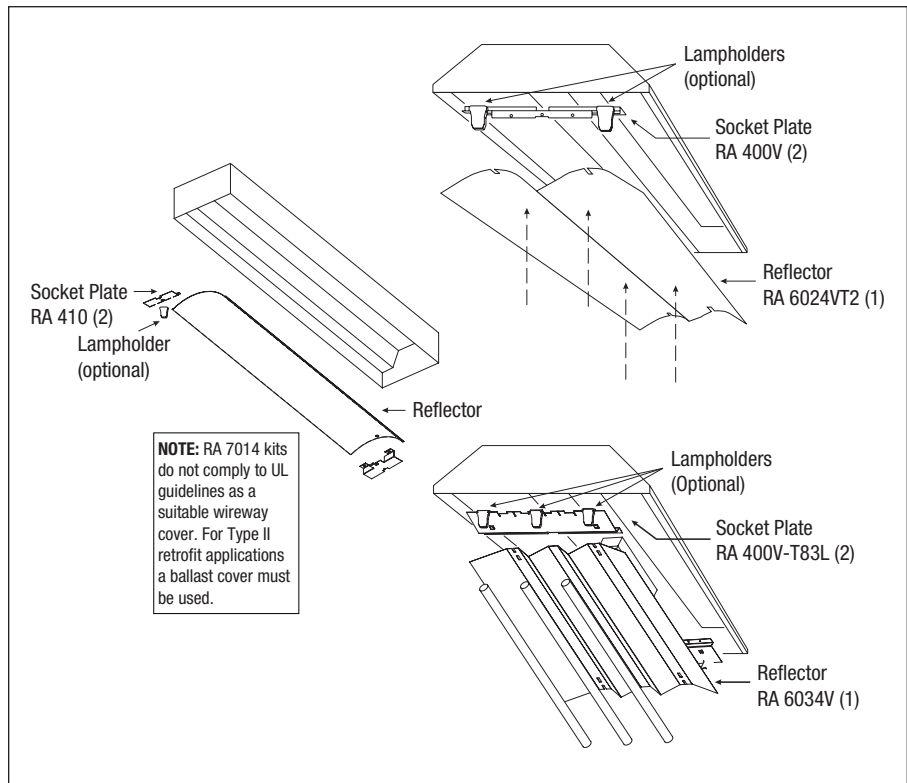
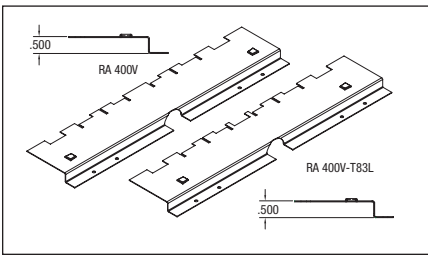
# 7000V Reflector Series

## for Troffer and Surface Fixture Retrofit

### Profile End Drawing



### Accessories



Catalog Number	Description
RA 7014 Kit	(1) RA 6014 1-lamp Reflector for 1' x 4' Troffer, (2) RA 410 Socket Plates, (4) TEK Screws
RA 7022V Kit	(1) RA 6022VT2 2-lamp Reflector for 2' x 2' Troffer, (2) RA 400V Socket Plates, (4) TEK Screws
RA 7024V Kit	(1) RA 6024VT2 2-lamp Reflector for 2' x 4' Troffer, (2) RA 400V Socket Plates, (4) TEK Screws
RA 7032V Kit	(1) RA 6032V 3-lamp Reflector for 2' x 2' Troffer, (2) RA 400V-T83L, (4) TEK Screws
RA 7034V Kit	(1) RA 6034V 3-lamp Reflector for 2' x 4' Troffer, (2) RA 400V-T83L, (4) TEK Screws

NOTE: For Highly Reflective Specular Aluminum, delete prefix "RA" and replace with "RM" or for White Aluminum delete "RA" and replace with "RW". Also available in 20 pack kits.

This drawing is for reference only. Actual part dimensions will vary. Customer is urged to review actual samples to confirm fit and function. All specifications and dimensions are subject to change without notice.

7000V 06/12

**Lighting**  
Plastics  
**Solutions**  
RETROFIT SPECIALISTS

[www.mylpsolutions.com](http://www.mylpsolutions.com)

**TAMPA BAY**  
2140 Range Road, Suite A | Clearwater, FL 33765  
800-587-3310 | 727-441-9581 | 727-446-2451 fax

**CENTRAL FLORIDA**  
2119 Directors Row, Suite 5 | Orlando, FL 32809  
800-682-4197 | 407-398-1001 | 407-398-1003 fax

[info@mylpsolutions.com](mailto:info@mylpsolutions.com)

**SOUTHEAST US**  
3367 W Hospital Avenue, Suite B | Chamblee, GA 30341  
800-548-9101 | 770-817-7020 | 770-817-7021 fax

**NORTHEAST US**  
6965 Airport Highway Lane | Pennsauken, NJ 08109  
856-661-2442 | 856-661-2447 fax